

**Report No.:** 238551574d 001 Page 1 of 6

**Client:** USI CORPORATION

**Contact Information:** No.9, Dinghu 5th St., Guishan Dist., Taoyuan City 33378, Taiwan (R.O.C.)

**Identification/  
Model No(s):** Ethylene-Vinyl Acetate Copolymer (EVA)  
UE629,UE630,UE632,UE659,UE633,UE612-04,UE649-04,  
UE634-04,UE638-04,UE639-04,UE653-04,UE647-04,  
UE654-04,UE2606,UE2828,UE3330,UE3312,UE3302,  
UE33002,UE4055,UE4003,UE40C,UE33C,UE40K,UE020,  
UE030,UE040,UE050,UE055,UE508,UE510,UE2818,  
UE640-04,UE3345

**Sample obtaining method:** Sending by customer

**Condition at delivery:** Test item complete and undamaged.

**Sample Receiving date:** 2022-12-29

**Testing Period:** 2022-12-29 to 2023-01-06

**Place of testing:** Chemical laboratory Shanghai

<b>Test Specification:</b>	<b>Test result:</b>
1. Cadmium, Lead, Chromium (VI), Mercury, Polybrominated biphenyls (PBB) and Polybrominated diphenyl ethers (PBDE)	PASS
2. BBP, DBP, DEHP, DIBP content	PASS
According to RoHS (recast): Restriction of the Use of Certain Hazardous Substances in Electrical and Electronic Equipment, 2011/65/EU Annex II and its amendment Directive (EU) 2015/863	PASS

For and on behalf of  
TÜV Rheinland (Shanghai) Co., Ltd.

2023-01-09

Date



Nicky Chen / Assistant Manager

Name/Position

Sample information is provided by customer. Test result is drawn according to the kind and extent of tests performed.  
This test report relates to the above mentioned test sample. Without permission of the test center this test report is not permitted to be duplicated in extracts. This test report does not entitle to carry any safety mark on this or similar products.  
"Decision Rule" document announced in our website (<https://www.tuv.com/landingpage/en/qm-gcn/>) describes the statement of conformity and its rule of enforcement for test results are applicable throughout this test report.

**Test Report No.: 238551574d 001**

Page 2 of 6

**Material List:**

Item: Ethylene-Vinyl Acetate Copolymer (EVA)  
UE629,UE630,UE632,UE659,UE633,UE612-04,UE649-04,  
UE634-04,UE638-04,UE639-04,UE653-04,UE647-04,  
UE654-04,UE2606,UE2828,UE3330,UE3312,UE3302,  
UE33002,UE4055,UE4003,UE40C,UE33C,UE40K,UE020,  
UE030,UE040,UE050,UE055,UE508,UE510,UE2818,  
UE640-04,UE3345

Material No.	Material	Color	Location
M004	Plastic	Translucent	TCL221222-04

**Test Report No.: 238551574d 001**

Page 3 of 6

**1. Cadmium, Lead, Chromium (VI), Mercury, Polybrominated biphenyls (PBB) and Polybrominated diphenyl ethers (PBDE)**

Test Method: Total Cadmium, Lead, Mercury, Chromium  
- Ref. to IEC 62321-4:2013+AMD1:2017 and IEC 62321-5:2013

Chromium (VI)  
- For Metal material - Ref. to IEC 62321-7-1:2015  
- For Plastic or Electronic material - Ref. to IEC 62321-7-2:2017  
- For Leather material - Ref. to EN ISO 17075-1:2017

PBBs, PBDEs - Ref. to IEC 62321-6:2015

**Test Result:**

	Cd	Cr(VI)	Pb	Hg	PBBs (*)	PBDEs (*)
<b>Maximum Permissible Limit (%)</b>	0.01	0.1	0.1	0.1	0.1	0.1

Material No.	(%)					
	Cd	Cr <sup>^</sup>	Pb	Hg	PBBs (*)	PBDEs (*)
	RL (%)					
	0.0002	0.0008	0.0002	0.0002	0.0005	0.0005
M004	< RL	< RL	< RL	< RL	< RL	< RL

Material No.	Hexavalent Chromium Content (%) (*2) RL: 0.0008%
M004	< RL

**Abbreviation:**

- Pb = Lead
- Cd = Cadmium
- Hg = Mercury
- Cr = Chromium
- Cr (VI) = Chromium (VI)
- PBBs = Total Polybrominated Biphenyls
- PBDEs = Total Polybrominated Diphenyl Ethers
- < = Less than
- RL = Reporting Limit
- n.a. = Not Applicable
- ^ = The total Chromium have been determined
- % = Percentage

**Remark:**

**Test Report No.: 238551574d 001**

Page 4 of 6

\* The reporting limit for each individual PBBs and individual PBDEs are :

Reporting Limit (%)		
<b>PBBs</b>	Bromobiphenyl	0.0005
	Dibromobiphenyl	0.0005
	Tribromobiphenyl	0.0005
	Tetrabromobiphenyl	0.0005
	Pentabromobiphenyl	0.0005
	Hexabromobiphenyl	0.0005
	Heptabromobiphenyl	0.0005
	Octabromobiphenyl	0.0005
	Nonabromobiphenyl	0.0005
	Decabromobiphenyl	0.0005
<b>PBDEs</b>	Bromodiphenylether	0.0005
	Dibromodiphenyl ether	0.0005
	Tribromodiphenyl ether	0.0005
	Tetrabromodiphenyl ether	0.0005
	Pentabromodiphenyl ether	0.0005
	Hexabromodiphenyl ether	0.0005
	Heptabromodiphenyl ether	0.0005
	Octabromodiphenyl ether	0.0005
	Nonabromodiphenyl ether	0.0005
	Decabromodiphenyl ether	0.0005

(\*2) The Chromium (VI) content of plastic sample or electronic sample have been confirmed with reference to IEC 62321-7-2:2017

(\*3) The Chromium (VI) content of leather sample have been confirmed with reference to EN ISO 17075-1:2017.

**Test Report No.: 238551574d 001**

Page 5 of 6

**2. BBP, DBP, DEHP, DIBP content**

Test Method: IEC 62321-8:2017

**Test Result:**

	BBP	DBP	DEHP	DIBP
Maximum permissible Limit (%)	0.1	0.1	0.1	0.1

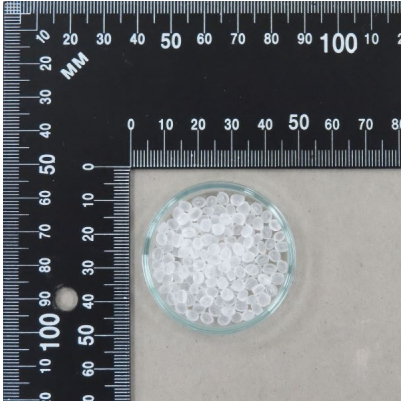
Test No.	Material No.	RL (%)			
		BBP	DBP	DEHP	DIBP
		0.005	0.005	0.005	0.005
T001	M004	< RL	< RL	< RL	< RL

**Abbreviation:** BBP= Benzylbutyl phthalate  
 DBP= Dibutyl phthalate  
 DEHP= Bis(2-ethylhexyl) phthalate  
 DIBP= Diisobutyl phthalate  
 < = less than  
 RL = Reporting Limit  
 %= percentage

**Test Report No.: 238551574d 001**

Page 6 of 6

Sample Photo



- END -

